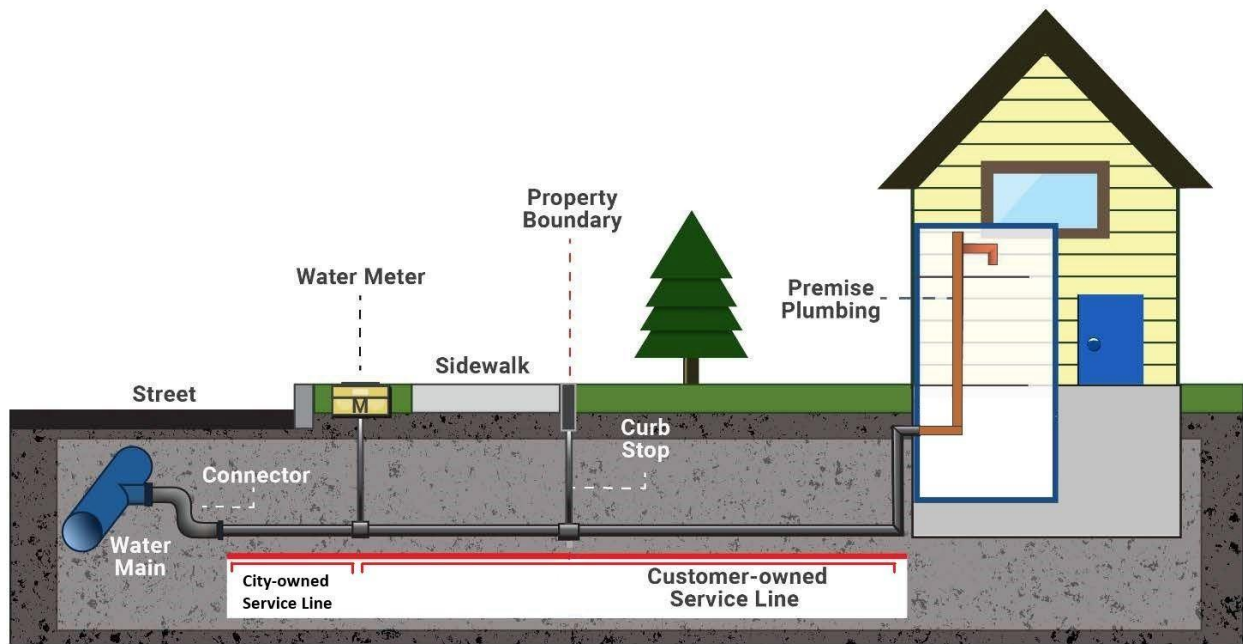


Find Your Water Service Line



You need to determine where the water service line is and how it connects to your home. The LOID owns a short section of the service line from the water main to the water meter. Beyond the water meter is under the ownership of the customer.

Outside Meter



To locate where the water service line enters your home, look for a water meter box. These are usually found at the front of your property near the street or sidewalk and are ground-level boxes labeled "water" or "meter." Once you find it, follow the shortest path to your home. The water service line should enter the building through the floor or foundation wall in this general area.

Test the Pipe Material



Once you've found where the water service line enters your home, look for a spot on the pipe closest to the wall or floor, ideally before it connects to a valve. At this spot, you can test the material the pipe is made of.

The following tools will be useful in helping you to determine what material your pipe is made of: a refrigerator magnet, a coin or key, a flashlight or mobile phone.

Plastic

This pipe comes in different materials and colors. If you tap it with a coin, the pipe does not make a ringing sound.

Copper

Use a key or coin to scratch the pipe. If the scratch appears orange and shiny like a penny, this means the pipe is made of copper. Additionally, a magnet will not stick to it.

Galvanized Steel or Iron

If the pipe appears silvery gray, is difficult to scratch and a magnet sticks to it, then the pipe is made of galvanized steel or galvanized iron.

Lead

If the pipe is silvery gray, is *easily* scratched, the metal seems soft, and a magnet *does not* stick to it— it is likely a lead pipe.



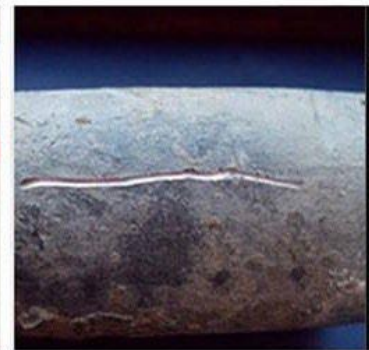
Plastic



Copper



Galvanized Steel & valve



Scratched Lead